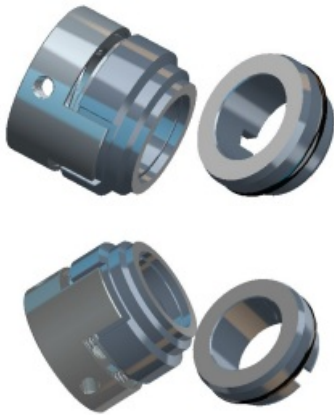


结构特点 Design features

- 内装、单端面、波簧(BS3)、多弹簧(BM3)、平衡型、传动套传动, 任意旋向, 结构紧凑, 安装方便。
- 安装尺寸符合DIN24960、ISO3069及GB6556标准。
- 橡胶O形圈结构, 推进型密封;
- Internally mounted, single face, Super-Sinus spring(BS3), multiple spring(BM3), balanced structure and driven by brace ear and claw transmission, any rotation direction. It can be mounted conveniently.
- Conform to the standard of DIN24960, ISO3069 and GB6556.
- O-ring pusher type seal.

材料 Materials(to DIN24960)

- 旋转环 Rotary Ring: U1、U2、Q1、Q2、V1、U12、U22、Q12、Q22
- 静止环 Stationary Ring: A、B、U1、U2、Q1、Q2、U12、U22、Q12、Q22
- 辅助密封 Auxiliary Seal: P、E、V、M1
- 弹簧及其他结构件材料 Spring and Other Parts: F、G、Y

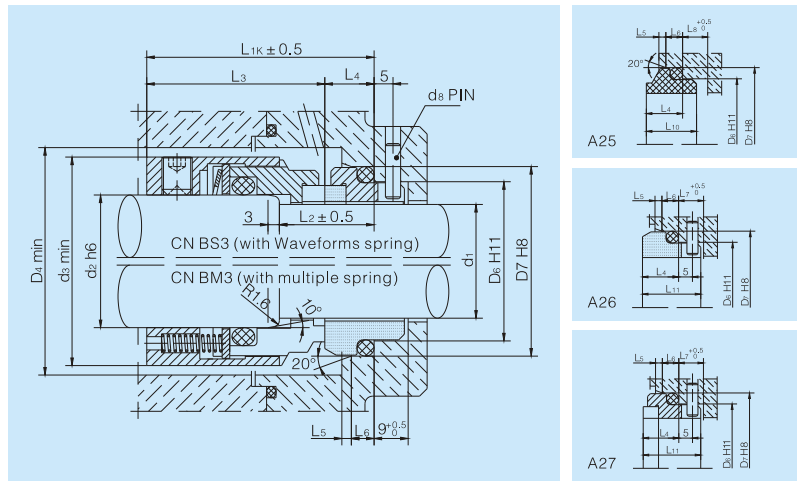


适用范围 Operating limits

- 压力 Pressure: 真空 Vacuum ~7.5MPa
- 温度 Temperature: -40~200°C
- 线速度 Speeds: ≤20m/sec
- 粘度 Viscosity: ≤1.0Pa.s(1000cp)软对硬(Soft VS Hard)
≤3.5Pa.s(3500cp)硬对硬(Hard VS Hard)

介质 Medium

油类、水、盐、非结晶性溶剂、有机溶剂及其它弱腐蚀性溶液。
Oil, water, salt, noncrystalline agent, organic solvents and other weak corrosive fluid.



型号 Model	d1	d2	d3	D4	D5	D7	d8	L1k	L2	L3	L4	L5	L6	L7	L8	L10	L11
18	18	22	36	38	27	33	3	45.0	20.0	35.0	10.0	2.0	5	9	4.5	11.5	16.5
20	20	24	38	40	29	35	3	45.0	20.0	35.0	10.0	2.0	5	9	4.5	11.5	16.5
22	22	26	40	42	31	37	3	45.0	20.0	35.0	10.0	2.0	5	9	4.5	11.5	16.5
24	24	28	42	44	33	39	3	47.5	20.0	37.5	10.0	2.0	5	9	4.5	11.5	16.5
25	25	30	44	46	34	40	3	47.5	20.0	37.5	10.0	2.0	5	9	4.5	11.5	16.5
28	28	33	47	49	37	43	3	50.0	20.0	40.0	10.0	2.0	5	9	4.5	11.5	16.5
30	30	35	49	51	39	45	3	50.0	20.0	40.0	10.0	2.0	5	9	4.5	11.5	16.5
32	32	38	54	58	42	48	3	50.0	20.0	40.0	10.0	2.0	5	9	4.5	11.5	16.5
33	33	38	54	58	42	48	3	50.0	20.0	40.0	10.0	2.0	5	9	4.5	11.5	16.5
35	35	40	56	60	44	50	3	50.0	20.0	40.0	10.0	2.0	5	9	4.5	11.5	16.5
38	38	43	59	63	49	56	4	52.5	23.0	41.5	11.0	2.0	6	9	5.0	13.0	17.5
40	40	45	61	65	51	58	4	52.5	23.0	41.5	11.0	2.0	6	9	5.0	13.0	17.5
43	43	48	64	68	54	61	4	52.5	23.0	41.5	11.0	2.0	6	9	5.0	13.0	17.5
45	45	50	66	70	56	63	4	52.5	23.0	41.5	11.0	2.0	6	9	5.0	13.0	17.5
48	48	53	69	73	59	66	4	52.5	23.0	41.5	11.0	2.0	6	9	5.0	13.0	17.5
50	50	55	71	75	62	70	4	57.5	25.0	44.5	13.0	2.5	6	9	5.0	15.0	19.5
53	53	58	78	83	65	73	4	57.5	25.0	44.5	13.0	2.5	6	9	5.0	15.0	19.5
55	55	60	80	85	67	75	4	57.5	25.0	44.5	13.0	2.5	6	9	5.0	15.0	19.5
58	58	63	83	88	70	78	4	62.5	25.0	49.5	13.0	2.5	6	9	5.0	15.0	19.5
60	60	65	85	90	72	80	4	62.5	25.0	49.5	13.0	2.5	6	9	5.0	15.0	19.5
63	63	68	88	93	75	83	4	62.5	25.0	49.5	13.0	2.5	6	9	5.0	15.0	19.5
65	65	70	90	95	77	85	4	62.5	25.0	49.5	13.0	2.5	6	9	5.0	15.0	19.5
70	70	75	99	104	83	92	4	70.0	28.0	55.0	15.0	2.5	7	9	5.0	17.0	21.5
75	75	80	104	109	88	97	4	70.0	28.0	55.0	15.0	2.5	7	9	5.0	17.0	21.5
80	80	85	109	114	95	105	4	70.0	28.0	54.5	15.5	3.0	7	9	5.0	17.5	22.0
85	85	90	114	119	100	110	4	75.0	28.0	59.5	15.5	3.0	7	9	5.0	17.5	22.0
90	90	95	119	124	105	115	4	75.0	28.0	59.5	15.5	3.0	7	9	5.0	17.5	22.0
95	95	100	124	129	110	120	4	75.0	28.0	59.5	15.5	3.0	7	9	5.0	17.5	22.0
100	100	105	129	134	115	125	4	75.0	28.0	59.5	15.5	3.0	7	9	5.0	17.5	22.0